



**REGIONAL SPECIALISED METEOROLOGICAL CENTRE-TROPICAL CYCLONES, NEW DELHI
SPECIAL TROPICAL WEATHER OUTLOOK**

DEMS-RSMC SPECIAL TROPICAL CYCLONES NEW DELHI DATED 09.08.2022

SPECIAL TROPICAL WEATHER OUTLOOK FOR NORTH INDIAN OCEAN (THE BAY OF BENGAL AND ARABIAN SEA) VALID FOR NEXT 120 HOURS ISSUED AT 2000 UTC OF 09.08.2022 BASED ON 1800 UTC OF 09.08.2022.

Sub: Depression over interior Odisha and adjoining Chhattisgarh

THE DEPRESSION OVER INTERIOR ODISHA MOVED WEST-NORTHWESTWARDS WITH A SPEED OF ABOUT 18 KMPH DURING PAST 6 HOURS AND LAY CENTERED AT 2330 UTC OF THE 9TH AUGUST, 2022 OVER INTERIOR ODISHA ADJOINING CHHATTISGARH NEAR LATITUDE 21.5°N AND LONGITUDE 83.3°E ABOUT 70 KM WEST OF SAMBALPUR (42883) AND 170 KM EAST-NORTHEASTWARDS OF RAIPUR (42874).

IT IS LIKELY TO MOVE WEST-NORTHWESTWARDS, AND WEAKEN GRADUALLY INTO A WELL-MARKED LOW PRESSURE AREA OVER CHHATTISGARH AND NEIGHBOURHOOD DURING NEXT 12 HOURS.

AS PER INSAT-3D IMAGERY AT 1800 UTC, SCATTERED TO BROKEN LOW AND MEDIUM CLOUDS WITH EMBEDDED INTENSE TO VERY INTENSE CONVECTION LAY OVER ODISHA, CHATTISGARH, COASTAL GANGETIC WEST BENGAL & NORTHWEST BAY OF BENGAL. MINIMUM CLOUD TOP TEMPERATURE IS MINUS 93 DEGREE CELSIUS.

THE ASSOCIATED MAXIMUM SUSTAINED WIND SPEED IS 25 KNOTS GUSTING TO 35 KNOTS. THE ESTIMATED CENTRAL PRESSURE IS 993 HPA. SEA CONDITION IS ROUGH TO VERY ROUGH OVER NORTHWEST BAY OF BENGAL.

REMARKS:

THE MADDEN JULIAN INDEX (MJO) CURRENTLY LIES IN PHASE 1 WITH AMPLITUDE LESS THAN 1. IT IS LIKELY TO CONTINUE IN SAME PHASE WITH AMPLITUDE REMAINING LESS THAN 1 DURING NEXT 5 DAYS.

LOW LEVEL VORTICITY IS AROUND $100 \times 10^{-6} \text{ S}^{-1}$ AROUND SYSTEM CENTRE AND IS EAST-WEST ORIENTED. LOW LEVEL CONVERGENCE HAS SLIGHTLY DECREASED DURING PAST 06 HOURS AND IS AROUND $15 \times 10^{-5} \text{ S}^{-1}$ TO THE SOUTHWEST OF SYSTEM CENTRE. UPPER LEVEL DIVERGENCE IS AROUND $10 \times 10^{-5} \text{ S}^{-1}$ OVER SYSTEM CENTRE AND IS EAST-WEST ORIENTED OVER ENTIRE CENTRAL INDIA. WIND SHEAR IS LOW (05-10 KNOTS) OVER THE SYSTEM CENTRE AND ALONG THE FORECAST TRACK.

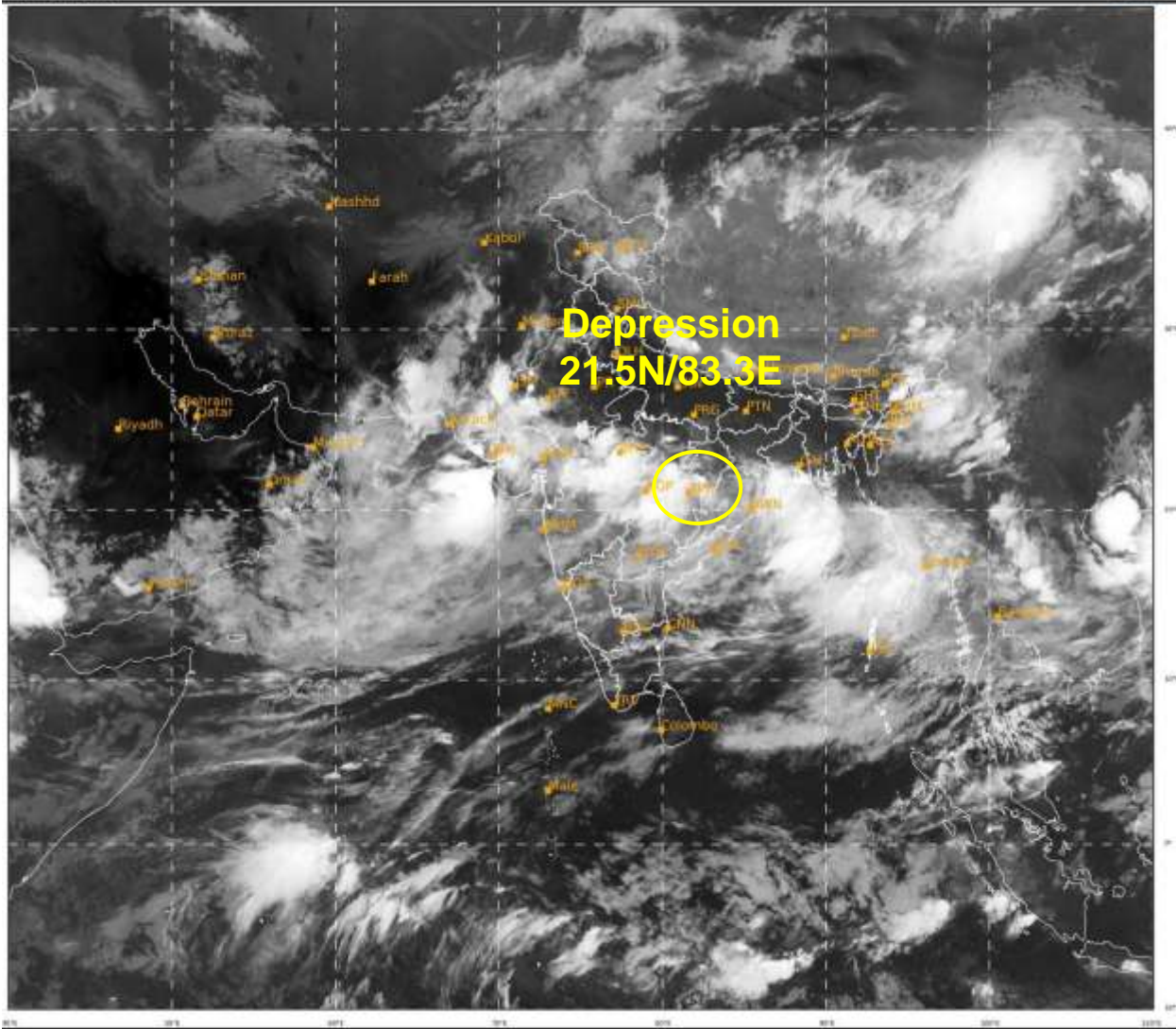
MOST OF THE MODELS INDICATE THAT THE SYSTEM WOULD MOVE WEST-NORTHWESTWARDS AND WEAKEN GRADUALLY BY TODAY. MODELS ARE ALSO INDICATING LIKELY EMERGENCE OF THE SYSTEM INTO NORTHEAST ARABIAN SEA AROUND 12TH AUGUST.

CONSIDERING ALL THE ABOVE, IT IS INFERRED THAT THE DEPRESSION OVER INTERIOR ODISHA IS LIKELY TO MAINTAIN IT'S INTENSITY TODAY AND WEAKEN GRADUALLY INTO A WELL-MARKED LOW PRESSURE AREA OVER CHHATTISGARH AND NEIGHBOURHOOD TOMORROW.

**(Dr. Amit Bhardwaj)
SCIENTIST-C, NWP Division, NEW DELHI**

SAT : INSAT-3DR IMG
IMG_TIR1 10.8 um
LIC Mercator

09-08-2022/(1745 to 1812) GMT
09-08-2022/(2315 to 2342) IST



437

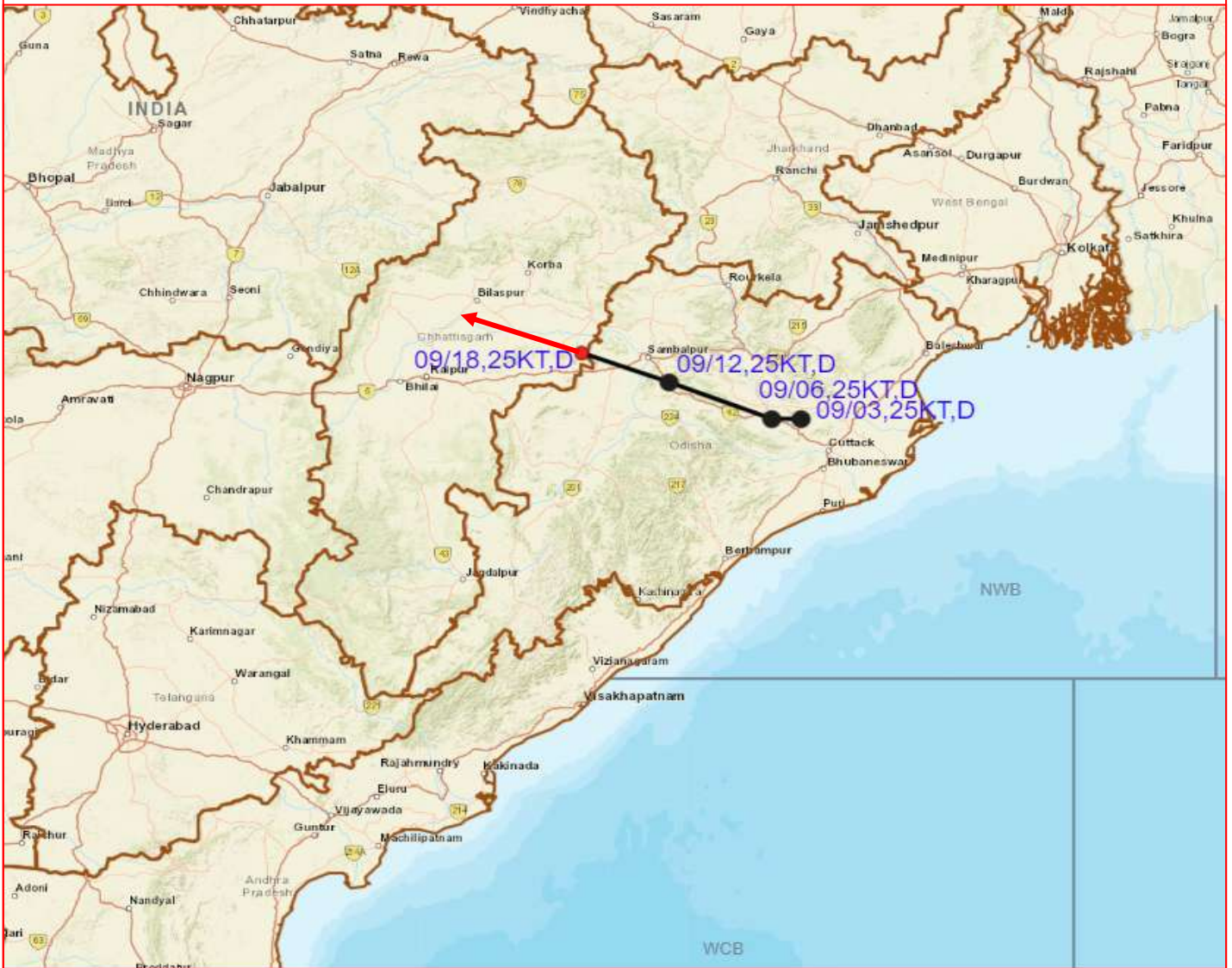
944

IMD, DELHI

Cloud distribution: (a) Isolated: <25%, Scattered:25-50%, Broken: 51-75%, Solid:>75%, Convection Intensity: (a) Weak: Cloud Top Temperature (CTT) >-25°C, (b) Moderate: CTT: - 25°C to -40°C, (c) Intense: CTT: - 41°C to -70°C and (d) Very Intense: : Less than -70°C
PROBABILITY OF CYCLOGENESIS (FORMATION OF DEPRESSION): NIL: 0%, LOW: 1-33%, , MODERATE: 34-66% AND HIGH: 67-100%
This is a guidance Bulletin for WMO/ESCAP Panel Member countries. Visit respective National websites for Country specific Bulletins



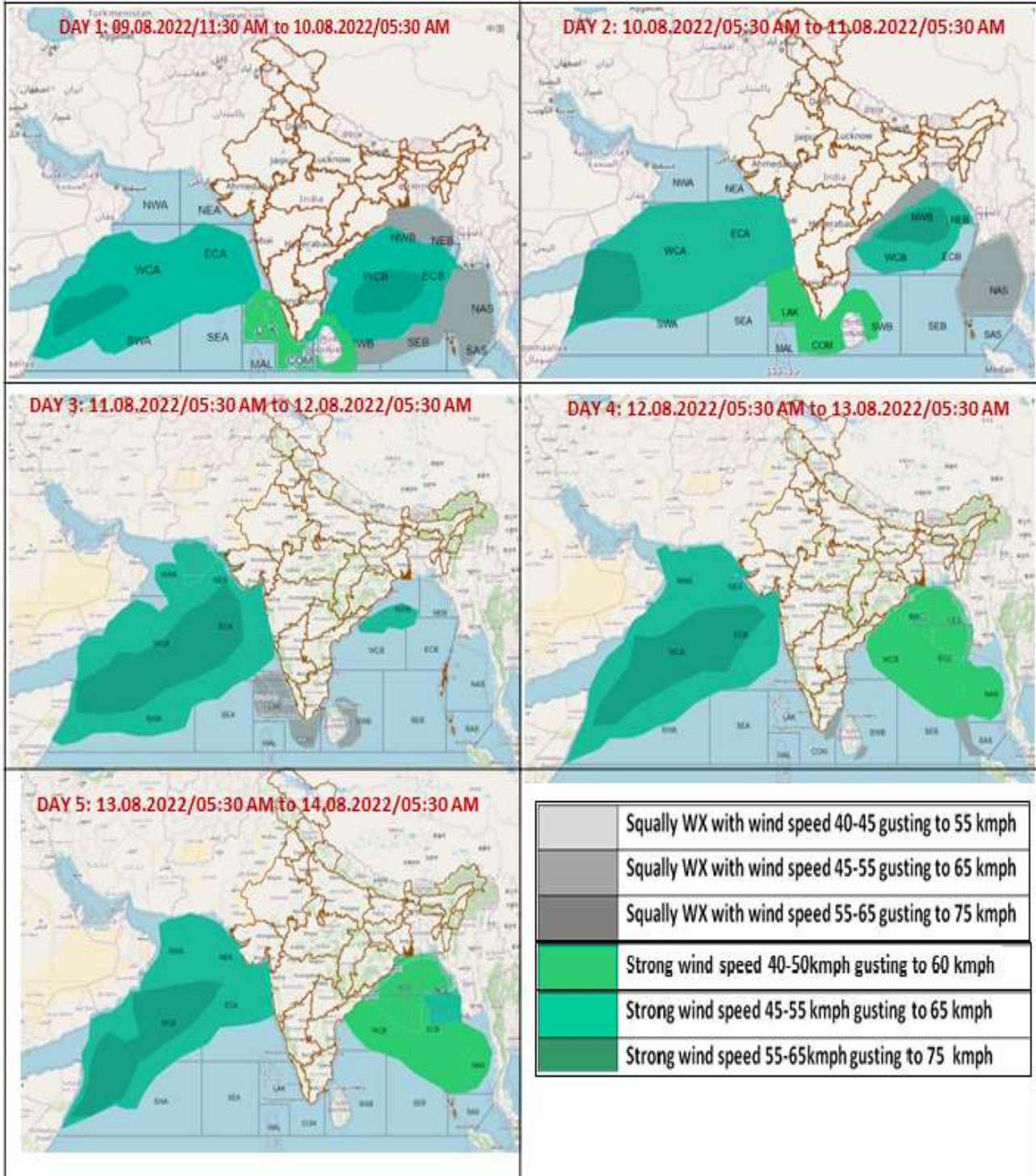
OBSERVED AND FORECAST TRACK OF DEPRESSION OVER INTERIOR ODISHA AND ADJOINING CHHATTISGARH BASED ON 1800 UTC OF 09TH AUGUST, 2022



<p>DATE/TIME IN UTC IST=UTC + 0530 L: LOW PRESSURE AREA WML: WELL MARKED LOW PRESSURE AREA D: DEPRESSION (17-27 KT) DD: DEEP DEPRESSION (28-33 KT) CS: CYCLONIC STORM (34-47 KT) SCS: SEVERE CYCLONIC STORM (48-63KT) VSCS: VERY SEVERE CYCLONIC STORM (64-89 KT) ESCS: EXTREMELY SEVERE CYCLONIC STORM (90-119 KT) SuCS: SUPER CYCLONIC STORM (≥ 120 KT)</p>	<ul style="list-style-type: none"> LESS THAN 34 KT 34-47 KT ≥ 48 KT OBSERVED TRACK FORECAST TRACK CONE OF UNCERTAINTY
--	---

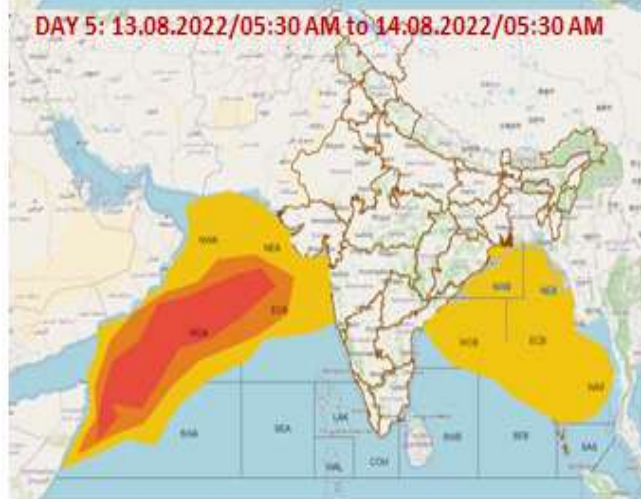
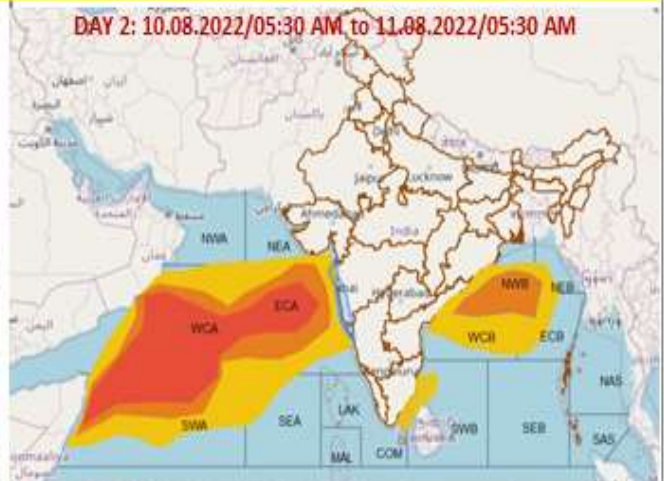
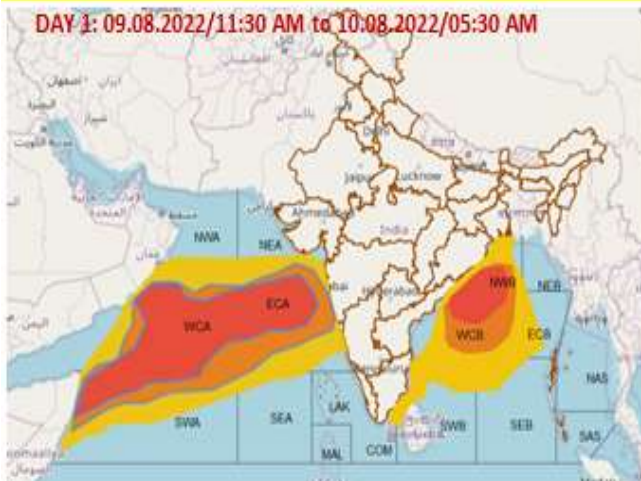
Cloud distribution: (a) Isolated: <25%, Scattered:25-50%, Broken: 51-75%, Solid:>75%, Convection Intensity: (a) Weak: Cloud Top Temperature (CTT) >-25°C, (b) Moderate: CTT: - 25°C to -40°C, (c) Intense: CTT: - 41°C to -70°C and (d) Very Intense: : Less than -70°C
PROBABILITY OF CYCLOGENESIS (FORMATION OF DEPRESSION): NIL: 0%, LOW: 1-33%, , MODERATE: 34-66% AND HIGH: 67-100%
 This is a guidance Bulletin for WMO/ESCAP Panel Member countries. Visit respective National websites for Country specific Bulletins

Fishermen Warning Graphics



Cloud distribution: (a) Isolated: <25%, Scattered:25-50%, Broken: 51-75%, Solid:>75%, Convection Intensity: (a) Weak: Cloud Top Temperature (CTT) >-25°C, (b) Moderate: CTT: - 25°C to -40°C, (c) Intense: CTT: - 41°C to -70°C and (d) Very Intense: : Less than -70°C
PROBABILITY OF CYCLOGENESIS (FORMATION OF DEPRESSION): NIL: 0%, LOW: 1-33%, , MODERATE: 34-66% AND HIGH: 67-100%
 This is a guidance Bulletin for WMO/ESCAP Panel Member countries. Visit respective National websites for Country specific Bulletins

Probability of exceedance of maximum sustained winds ≥ 45 kmph



Probability of exceedance	
	Low (1-33%)
	Moderate (34-67%)
	High (68-100%)

Cloud distribution: (a) Isolated: <25%, Scattered:25-50%, Broken: 51-75%, Solid:>75%, Convection Intensity: (a) Weak: Cloud Top Temperature (CTT) >-25°C, (b) Moderate: CTT: - 25°C to -40°C, (c) Intense: CTT: - 41°C to -70°C and (d) Very Intense: : Less than -70°C
PROBABILITY OF CYCLOGENESIS (FORMATION OF DEPRESSION): NIL: 0%, LOW: 1-33%, , MODERATE: 34-66% AND HIGH: 67-100%
 This is a guidance Bulletin for WMO/ESCAP Panel Member countries. Visit respective National websites for Country specific Bulletins